

Fin de semaine de la faune  
**Waterton**  
Wildlife Weekend

September 23–25, 2011 | le 23–25 septembre, 2011



In cooperation with | En coopération avec



Parks  
Canada

Parcs  
Canada

**Festival Program**

photo :  
Daniel Cox ~ Natural Exposures

**1-800-215-2395 ~ [www.watertonwildlife.com](http://www.watertonwildlife.com)**



Elk near Mount Galway, Waterton Lakes National Park ~ Parks Canada

## Parks Canada is celebrating 100 Years as the World's First National Park Service



Imagine what the landscape was like 100 years ago. Much was still a vast wild expanse. Consider the foresight of a society that recognized the need to preserve exceptional natural places for future generations.

Kudos to Canadians! This year marks the 100th anniversary of the world's first national park service: **Parks Canada**.

The marvels of Waterton Lakes National Park is an outstanding example of such a protected place. One of the earliest national parks, Waterton was the fourth designated in what now includes a system of National Parks, National Historic Sites, and National Marine Conservation areas.

Canada continues to be a world leader in conservation and has received the highest accolade from the World Wildlife Federation, the Gift to the Earth Award.



Waterton's wildlife is a living legacy of the national park designation. The preservation and conservation of the diverse natural habitats here maintain the full range of its native wildlife species.

### Essential Habitat

Waterton has abundant wildlife because of its rich and diverse habitats. Several different eco-regions meet in Waterton. That combination results in 45 different habitat types including grasslands, shrublands, wetlands, lakes, spruce, fir, pine and aspen forest and high alpine. Preserved and protected within Waterton Lakes National Park and adjacent public and private lands, the natural landscape is intact and wildlife thrive here.

When in Waterton visit the Nature Conservancy of Canada's Weston Conservation Centre near the Park gate. The Centre and its interpretive trail celebrates The Waterton Front, the largest private land conservation initiative in Canada.

### Science and Understanding

Science and research are important elements in understanding the lifestyles and needs of wildlife. A number of projects are underway to deepen our understanding of Waterton wildlife.

For more information, contact Barb Johnson, Parks Canada Ecosystem Scientist: 403-859-5182 [barb.johnston@pc.gc.ca](mailto:barb.johnston@pc.gc.ca)

# Science and Understanding

## Brown-Eyed Beggars

Placidly munching grasses or mooching for snacks, deer appear tame, but don't be fooled! This situation has developed over many years, creating a public safety hazard and unnatural behaviour by the deer and their fawns.

When deer become accustomed to human food and touch, they lose their natural fear and may aggressively beg. This increases risk to others, especially children, as deer startle easily and may strike out with their hooves or antlers. You can help by moving away from approaching deer and resisting the urge to entice, feed, pet or pose with them. Enjoy viewing deer at a safe distance.

Parks Canada carried out an innovative project last spring to determine if trained herding dogs could move deer out of the community in the spring fawning season, and re-establish more natural deer behaviours. Christine Jobe, a trained dog handler, used her border collies to gently shepherd deer out of the community. The objective was to rebuild the natural wariness that deer have for people and dogs.

Re-establishing a more natural and safe situation within the community is important. Parks Canada will continue to work with the Waterton Community Deer Advisory Group to implement a long-term strategy that ensures public safety & wildlife protection, while maintaining quality wildlife viewing opportunities for visitors. The program was successful and plans are to have them back next spring.

**Learn more at 'Dogs Breakfast' program 3E on Sunday.**



Parks Canada

## Bats Revealed!

Little is known about bats in the Waterton-Glacier International Peace Park, so scientists in Waterton and Glacier national parks have begun a two-year bat inventory. They are starting by inventorying what bats live here and where in the parks the different species can be found. The scientists will then use their findings as baseline information for long-term monitoring.

Using acoustic ultrasonic detectors, they can identify the distinctive echolocation sounds of different species of bats. They are also capturing bats in mist nets and observing roost sites. The eastern front of the Rocky Mountains may be a migratory corridor for bats, and this study may determine which species migrate through the parks during spring and fall.

Results of the inventory will provide baseline knowledge of the bats before the potential arrival of a deadly fungal disease called White Nose Syndrome, which may affect local bats.



## Hey Bear - Say "Cheese": Remote Camera and DNA Research

Seeing wildlife is a highlight for most of Waterton's visitors. Sometimes they are lucky but frequently they leave without seeing anything other than deer and magpies. Park scientists face the same problem when trying to monitor wildlife populations: it is hard to count animals when you don't see them!

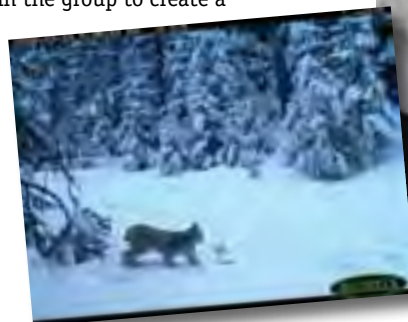
One technique used to overcome this problem is 'camera trapping'. This is where specially-designed digital cameras are placed at strategic locations in the park, and the animals take their own pictures! When an animal walks by, it triggers an infrared motion detector, which triggers the camera shutter.

The images are downloaded along with details about location, date and time. They are then sorted by species, age, sex and the number of animals in the group to create a database.

The cameras also document the number and type of trail users in the park. While traditional infrared trail counters can tell that someone passed along a trail, it's not known whether it was a hiker or a deer. A camera records whether it was an animal or a human, and whether the person was riding a horse or a bike, using skis or snowshoes, etc.

Trials are also being conducted to identify individual animals by collecting hair. Fur samples from trees where bears rub themselves are undergoing DNA analysis.

**Learn more at program 3C on Sunday.**



Parks Canada

**CASTLE-CROWN WILDERNESS COALITION**

“There’s a great deal to be done. Let’s get at it.”

*Andy Russell*

These words and his many stories of the high country inspired a generation of activists to work to preserve the wild Rockies. In June 2005, Andy, one of Canada’s foremost conservationists and authors, passed on. Join HRH The Duke of Edinburgh, Robert Bateman, Farley Mowat, Sid Marty and many others in their efforts to designate the Castle Wilderness as the Andy Russell-I’tai sah köp Park.



T 403-627-5059  
E office@ccwc.ab.ca  
www.ccwc.ab.ca



Parks Canada

[www.ckua.com](http://www.ckua.com)

Waterton 99.3 fm



**ORIGINAL RADIO**



Maintaining natural terrestrial habitat is a key focus for Parks Canada volunteers.

**THE OUTDOOR OUTLET ~ PINCHER CREEK**

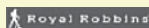
brand name  
outdoor gear, footwear & apparel at

clearout  
prices



Downtown Pincher Creek  
T 403-627-2227  
E outdooroutlet@mac.com  
www.outdooroutlet.ca

Before you buy  
... give us a try



[www.WatertonWildlife.com](http://www.WatertonWildlife.com) ~ 1-800-215-2395

The Waterton Wildlife Weekend is a Trail of the Great Bear Learning Program. It is produced in partnership with Parks Canada [www.pc.gc.ca](http://www.pc.gc.ca), Waterton Chamber of Commerce [www.MyWaterton.ca](http://www.MyWaterton.ca), Waterton Community Association [www.MyWaterton.ca](http://www.MyWaterton.ca), Tamarack Outdoor Outfitters [www.hikewaterton.ca](http://www.hikewaterton.ca), Stephen Harrington Photography [www.shphotography.ca](http://www.shphotography.ca) and Inkstone Design.

**DISCOVER**

the  
**WATERTON PARK FRONT**

*where conservation and ranching go hand-in-hand*

at  
**THE WESTON FAMILY CONSERVATION CENTRE**  
and  
**WATERTON SPRINGS INTERPRETIVE TRAIL**

**FEATURING**

Spectacular scenery, wildflowers & wildlife

Family-friendly displays & activities

1 km interpretive hiking trail

Free guided hikes on weekends & holidays, May-August at 10:30 am



THE W. GARFIELD WESTON  
FOUNDATION



Find us at Waterton Springs Campground

Highway 6, 3.3 km north of the Waterton Lakes National Park Entry Gate

1-877-262-1253 alberta@natureconservancy.ca www.natureconservancy.ca/ab

**OPEN VICTORIA DAY TO THANKSGIVING**